



One Watershed
One Plan

The Yellow Medicine River

Pilot Watershed Profile

Winter 2015

Planning Partners

Counties:

- Yellow Medicine
- Lyon
- Lincoln
- Lac Qui Parle

Soil and Water Conservation Districts:

- Yellow Medicine
- Lyon
- Lincoln
- Lac Qui Parle

Watershed Districts:

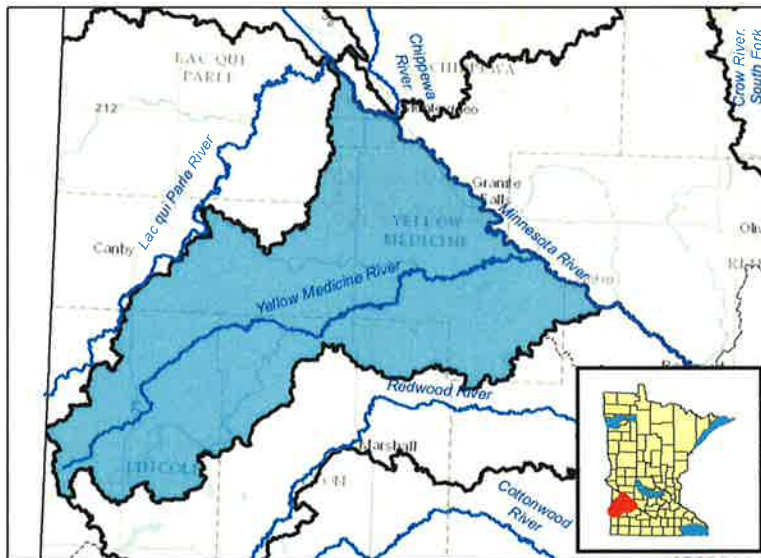
- Yellow Medicine River Watershed District

What is the *One Watershed, One Plan*?

The vision of the *One Watershed, One Plan* is to align planning on major watershed boundaries with prioritized, targeted, and measurable watershed plans that will be developed and implemented locally. These plans will build on existing efforts, using current local water plans, state and local knowledge and a systematic, science-based approach to watershed management.

The Yellow Medicine River Pilot Watershed

The *One Watershed, One Plan* boundary for the Yellow Medicine River was drafted along the area's major watershed boundary. The resulting four-county area includes Lac qui Parle, Lincoln, Lyon, and Yellow Medicine County.



In early 2014, planning partners in this watershed area joined together to submit a nomination to pilot the *One Watershed, One Plan*. In June, the Yellow Medicine River was selected as one of five major watersheds across the state to pilot this program.

The pilot program will involve a broad range of stakeholders, including local governments, state agencies, and community members as true partners in the planning process. The resulting plan will address the largest threats that provide the greatest environmental benefits to the Yellow Medicine River Watershed.



Next Steps for the *One Watershed, One Plan*

- The Yellow Medicine River watershed plan will be completed by 2016, and will be implemented throughout the 10-year timeframe of the plan
- Lessons, feedback, and experience gained from the Yellow Medicine River pilot watershed plan will adjust and streamline the framework for the statewide rollout of the program

One Watershed, One Plan Background

Minnesota has a long history of water management by local government. *One Watershed, One Plan* is rooted in this history and in work initiated by the Local Government Water Roundtable (Association of Minnesota Counties, Minnesota Association of Watershed Districts, and Minnesota Association of Soil and Water Conservation Districts). Roundtable members recommended that the local governments charged with water management responsibility should organize and develop focused implementation plans on a watershed scale.

That recommendation was followed by legislation in 2012 which gave the Board of Water and Soil Resources (BWSR) the authority to develop and implement a comprehensive watershed management plan approach as a means to transform the current system of water plans, largely organized on political boundaries, to one where plans are coordinated and consolidated on a watershed basis. This legislation has come to be known as *One Watershed, One Plan*.

How Do I Stay Informed?

For up-to-date information on the statewide rollout of the *One Watershed, One Plan*, please visit the BWSR program website, available at: www.bwsr.state.mn.us/planning/1W1P/index.html.

For information on the Yellow Medicine River pilot watershed, please contact your local County, Soil and Water Conservation District, or Watershed District office.

